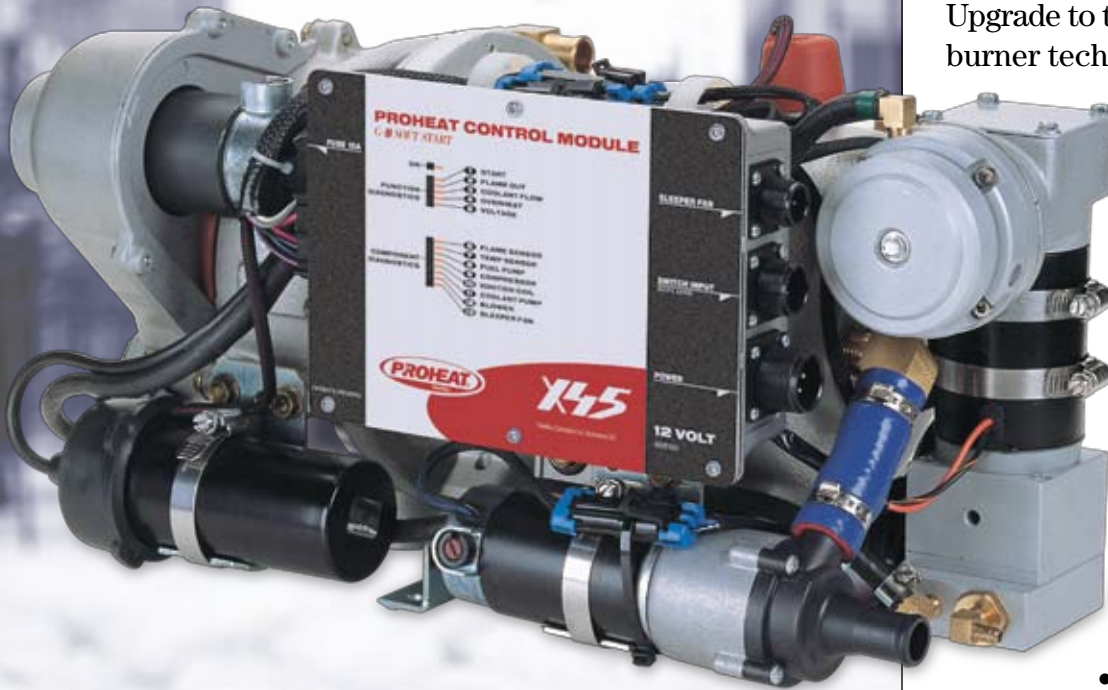




**MOTOR COACH  
INDUSTRIES**



## ProHeat X45

### Auxiliary Heater for your MCI® E4500 & J4500 Coaches

Upgrade to the current OE System. Superior burner technology for lower emissions and a cleaner environment. Replacement for both Espar and Webasto Auxiliary Heater in the MCI E4500 and J4500 coaches.

Complete retrofit kit includes:  
ProHeat auxiliary heater, mounting brackets, built in parallel flow circulation pump, coach boost pump, coolant lines and fuel feed line.

- Solid state electronics
- Sealed electrical connectors
- Heavy duty aluminum construction
- Complete Diagnostic Indicators
- Large, efficient sealed motors
- Softstart™ motor drive circuits
- No nozzle wear
- Readily available service parts

*Contact your MCI® fleet support manager or customer service representative for details.*

Part #:	Description
16L-16-374	X45 ProHeat Auxiliary Heater
T26-1178C	Retrofit kit contains hardware, brackets, hoses, fuel line and adaptor harness.

Specifications:	
Rating	45,000 BTU/hr (13kw)
Fuel Consumption	0.32 gal/hr (1.2 l/hr) max.
Ignition Type	Electronic spark ignition
Fuel Types	Diesel #1, #2, Kerosene
Operating Range	-40° - 122°F (-40° - 50°C)
Warranty	2 years parts & labor

Printed on recycled paper products

#### In the U.S.

MCI Fleet Support  
MCI Service Parts, Inc.  
Toll Free (800) 323-1290  
Toll Free Fax (800) 525-4569

#### In Canada

MCI Fleet Support  
Motor Coach Industries Limited  
Toll Free English (800) 665-0155 Français (800) 546-3457  
Toll Free Fax (800) 872-2486

ProHeat1010rev

©2010 Motor Coach Industries International, Inc. and its subsidiaries. All rights reserved.



**MOTOR COACH  
INDUSTRIES**